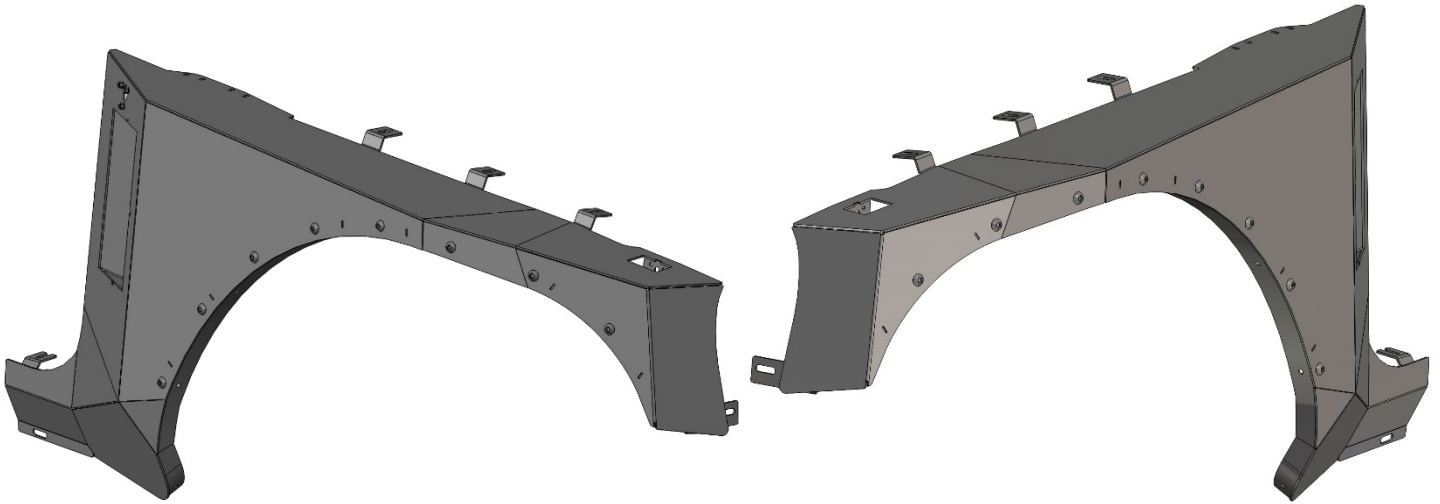


PSFF001



**2007-2016 JEEP JK WRANGLER UNLIMITED 4-DOOR
Pro-Series Front Replacement Fenders**



HARDWARE INCLUDED			
4	6mm x 25mm Hex Bolts	16	10mm x 20mm Button Head Bolts
8	6mm x 12mm x 1.6mm Flat Washers	16	10mm x 20mm x 2mm Flat Washers
4	6mm Nylon Lock Nuts	16	10mm Nylon Lock Nuts
3	5mm Hex Nylon Lock Nuts	3	5mm x 10mm x 1mm Flat Washers
SPECIAL TOOLS REQUIRED			
1	Electric Drill	1	T-40 Torx Bit
1	1/4" Drill Bit	1	T-30 Torx Bit

PROCEDURE:

ASSISTANCE IS HIGHLY RECOMMENDED. Drilling Required.

STEP 1- REMOVE CONTENTS FROM BOX. VERIFY ALL PARTS ARE PRESENT. READ INSTRUCTIONS CAREFULLY. Factory installed or aftermarket "Rock Rails", side steps or running boards will likely have to be removed to install fenders.

STEP 2- *Optional* Install the supplied decorative stainless steel hardware along the edge of the fender trim. Hardware consists of (1) 10mm Button Head Bolt, (1) 10mm Washer and (1) 10mm Nylon Lock Nut per hole in fender, (**Figure 1**).

STEP 3- Disconnect and isolate the battery negative cable.

STEP 4- IMPORTANT!: In order to install these fenders the wiper cowl panel and the side cowl panels must be removed from the vehicle. Remove the windshield brackets by removing the 6 OE bolts from each side. **(Figure 2)**

STEP 5- Remove the windshield wipers from the wiper motor spindles by lifting up the plastic cover and removing the nut at base of each wiper. **(Figure 3)**. The wiper arms will require some force to remove, a windshield wiper arm puller may be required.

STEP 6- Remove the wiper cowl panel by removing the four bolts and four plastic clips. **(Figures 3 & 4)**.

STEP 7- Starting on the passenger side, remove the 2 bolts mounting to the inside of the side cowl panel and fold back the side cowl panel to expose the spot welds. **(Figure 5)**. Drill out the spot welds using a ¼" drill bit freeing the cowl from the vehicle. Once removed, clamp the cowl panel to a flat surface and bend the metal back to its original shape. This side cowling will be re-installed later. **IMPORTANT!** Any cutting or drilling tool may break or shatter. Government regulations require safety glasses & equipment at all times when cutting or drilling.

STEP 8- Remove the 6 fasteners holding the OE inner fender liners to the vehicle. Save hardware for re-installation. **(Figure 6)**

STEP 9- Unscrew the radio antenna mast from its base. Then remove the plastic cover over the base by squeezing the top and bottom while prying the sides out. **(Figure 7)** Now remove the 3 bolts securing the antenna base. **(Figure 8)** Unplug the wiring and set aside the antenna mount and hardware for re-use.

STEP 10- Unplug the fender side marker light wiring harness and plastic clip holding the wiring to the fender. **(Figure 9)**

STEP 11- Remove the bolts holding the fenders to the vehicle and carefully pull the OE fender off of the body. **(Figures 10-13)** Save hardware for re-installation.

STEP 12- Once fender is removed from vehicle, unbolt hood latches from the OE fender and transition them to your new RBP fender re-using the factory nut. **(Figure 14)**

STEP 13- Fasten the OE radio antenna mount to the new RBP fender by re-using the OE bolts and the supplied (3) 5mm Hex Nuts and (3) 5mm x 10mm Flat Washers. **(Figure 15)**

STEP 14- Using the (2) 6mm x 25mm Hex Bolts, (4) 6mm x 12mm Flat Washers, and (2) 6mm Nylon Lock Nuts attach the side cowling to the new RBP fender hand tight. **(Figure 16)** *Note: Only 2 of the 4 locations will be used based on variations when drilling out the spot welds.*

STEP 15- With assistance and with the front door open, carefully install your new RBP fender and side cowling by re-using the factory fender bolts and leave them hand tight.

STEP 16- Re-install the factory windshield bracket re-using the OE hardware.

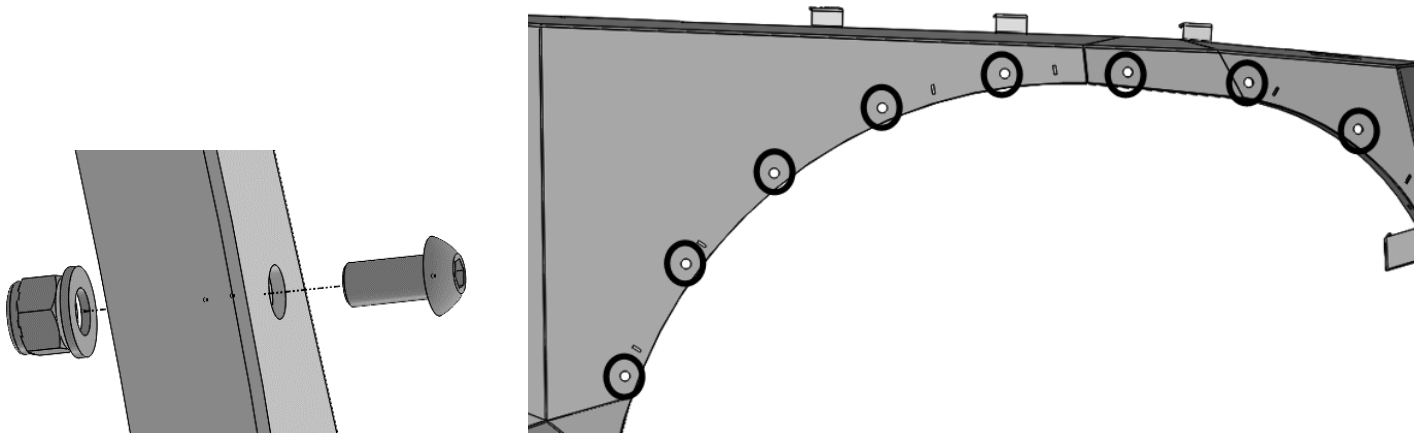
STEP 17- After verifying the position of the fender allows normal door operation, fully tighten the fender fasteners and the windshield brackets.

STEP 18- Repeat steps 7-17 for driver side fender (exclude steps 9 & 13).

STEP 19- Re-install wiper cowling and wiper blades.

Do periodic inspections to the installation to make sure that all hardware is secure and tight.

To protect your investment, wax this product after installing. Regular waxing is recommended to add a protective layer over the finish. Do not use any type of polish or wax that may contain abrasives that could damage the finish. Mild soap may be used to clean the fender assembly.



(Figure 1) Install stainless steel decorative hardware. 8 bolts per side.



(Figure 2) Remove bolts to free windshield bracket.



(Figure 3) Lift up the plastic covers and remove nuts at the base of the windshield wipers. After the wipers are free, remove the 2 bolts on each side of the cowl.



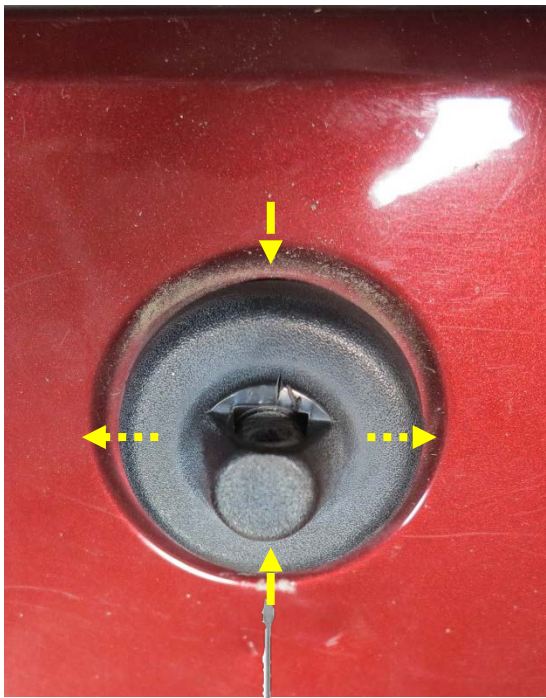
(Figure 4) Remove the 4 plastic clips and gently set aside the cowl for reuse.



(Figure 5) Drill out spot welds with 1/4" drill bit.



(Figure 6) Remove the 6 bolts securing factory fender liner.



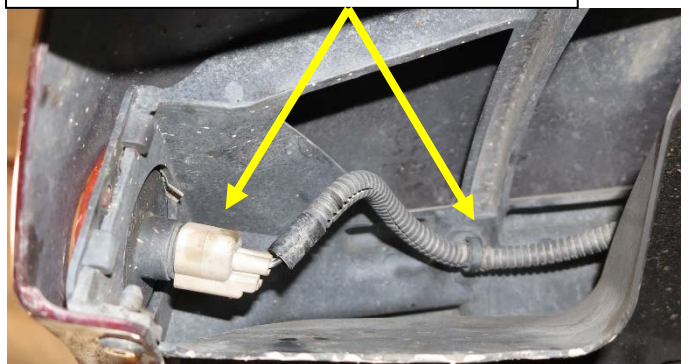
(Figure 7) Squeeze the top and bottom of the plastic cover and pry out on the sides.



(Figure 8) Remove the 3 bolts and unplug antenna wiring.



(Figure 9) Unplug side marker wiring and unclip wiring from fender.





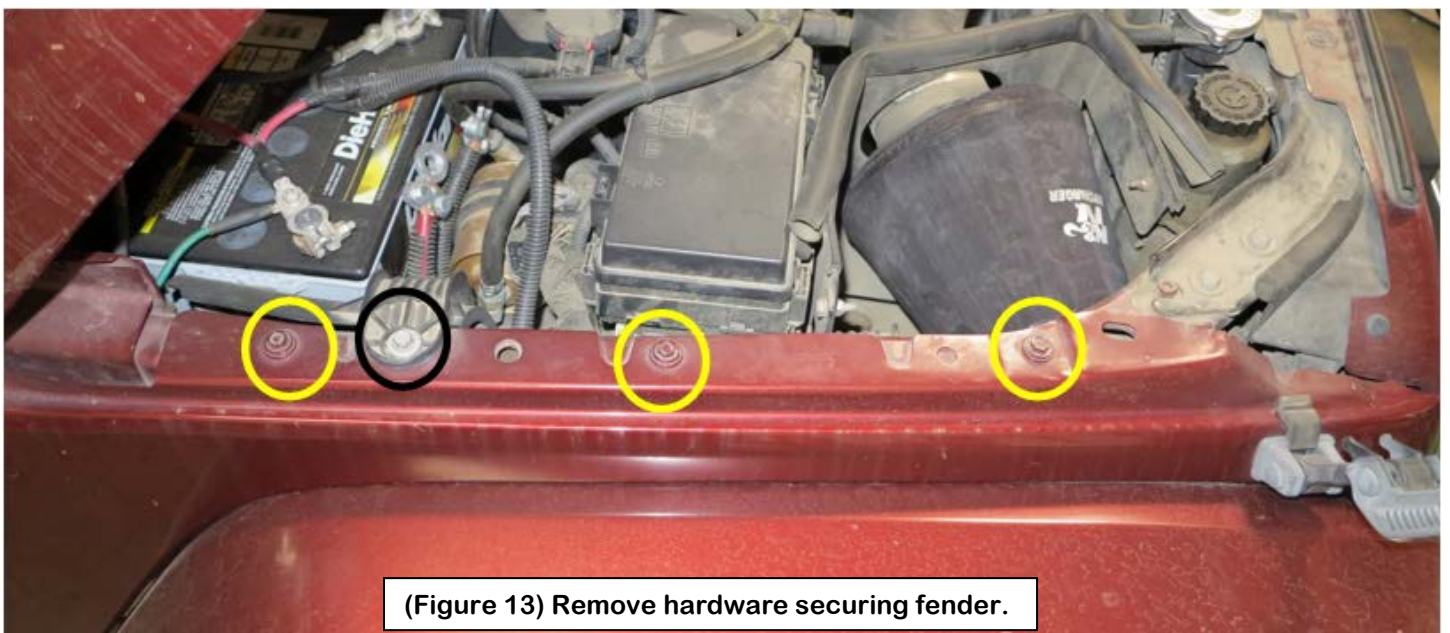
(Figure 10) Remove hardware securing fender.



(Figure 11) Remove hardware securing fender.



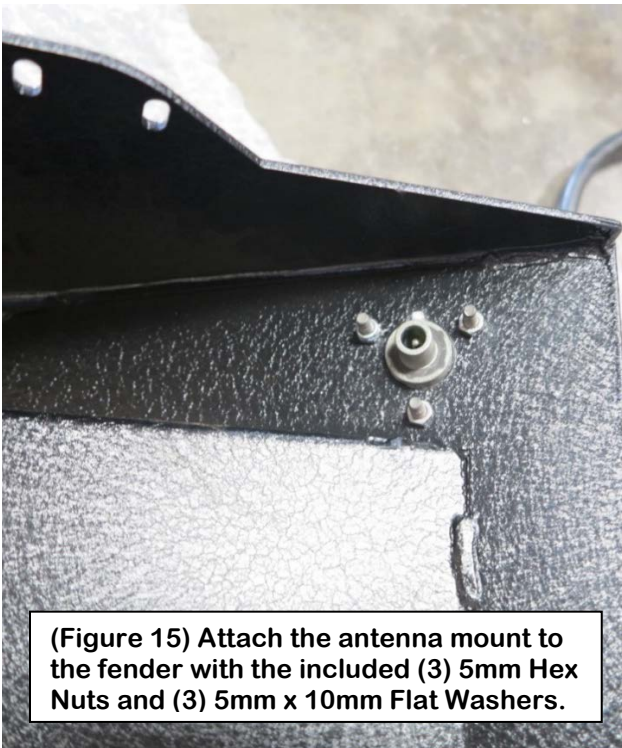
(Figure 12) Open door to remove hardware securing fender.



(Figure 13) Remove hardware securing fender.



(Figure 14) Transfer hood latch to your new RBP fender reusing the factory nut.



(Figure 15) Attach the antenna mount to the fender with the included (3) 5mm Hex Nuts and (3) 5mm x 10mm Flat Washers.



(Figure 16) Attach the side cowl to the fender using (2) 6mm x 25mm Hex Bolts, (4) 6mm x 12mm Flat Washers, and (2) 6mm Nylon Lock Nuts.



(Figure 15) Complete passenger side install.